



Fountain  
for the  
birds.

# Bristol Temple Quarter

# A Vision For Place

# Executive Summary

This document outlines the Vision for Place at Bristol Temple Quarter. It draws on ‘placemaking’ — a process of shaping places that inspires people to collectively reimagine and reinvent public spaces and buildings as the heart of their community.

Placemaking is about meaning-making: creating spaces that resonate with people that they want to build a relationship with. The vision has been influenced by hundreds of voices and ideas from community members and project stakeholders.

Too often, placemaking visions slip into generic marketing speak, trying to capture a place in a few snappy sentences. Yet places are complex and placemaking is about weaving meaning into spaces. This document goes deeper to define what Bristol Temple Quarter means for the future of Bristol and Bristolians. It is intended to be used by different people – communities, developers, stakeholders – throughout the life of the project and in different ways.

The Vision for Place builds on community and stakeholder feedback to define what makes Bristol, Bristol, and how this spirit can be reflected at Bristol Temple Quarter. It sets out Bristol’s key characteristics and what these mean for placemaking. These are Diverse Culture; Independent Thinking; Creative Spirit; Historic Fabric; and Natural Beauty.

With these characteristics defined, we set out our ambitions and vision for Bristol Temple Quarter – answering Why Here? Why Now? Why Us? It builds on Temple Quarter’s five Guiding Principles, exploring what they mean and what opportunities come out of them, setting out case studies from Bristol, the region and the wider world to showcase worldclass examples of placemaking and what we can learn from them.

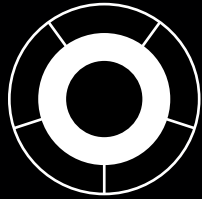
# Executive Summary

The vision and toolkit will be used throughout the life of Bristol Temple Quarter, to hold ourselves and our partners accountable as we deliver a place that works for all.

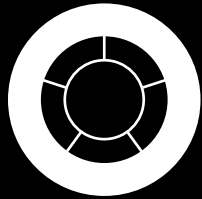
This document is a tool to be used. By asking “What If?”, we draw on public engagement to paint a picture of what Bristol Temple Quarter could feel like if we were ambitious and stuck to our principles. For example, we ask: what if Bristol Temple Quarter “was as safe to travel at night as it was by day?”. By giving tangible examples, we aim to help future communities, developers and stakeholders to understand our expectations for placemaking at Bristol Temple Quarter.

In tandem with the Vision for Place is a Placemaking Toolkit. This toolkit holds all the tools we used to create the vision collectively with communities, designers and stakeholders. It aims to give developers and future partners the techniques to take this vision forward and bring it to life, to work in more inclusive ways and draw on the city’s unique character.

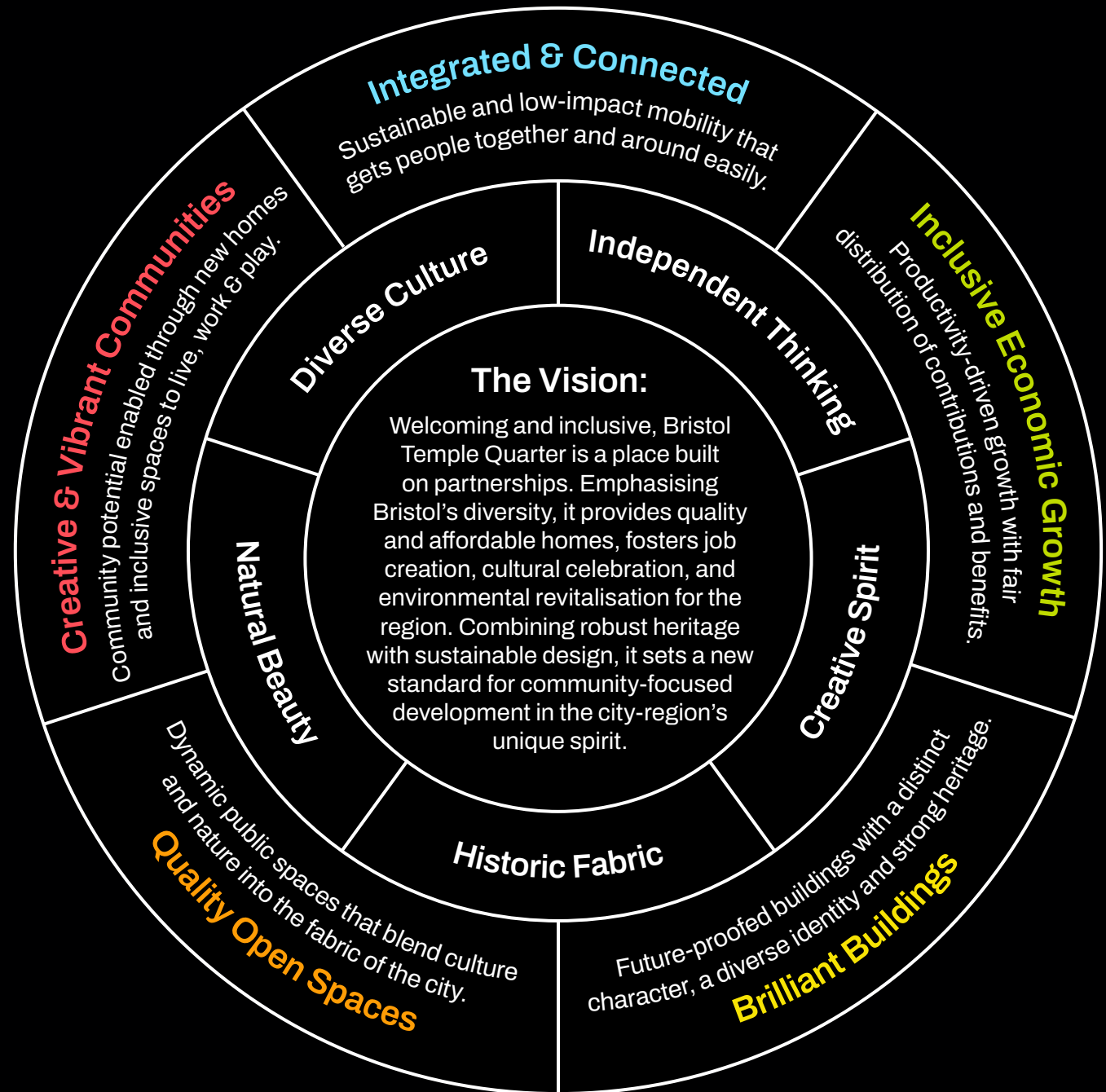
# Vision Compass



Bristol's Unique Spirit



5 Guiding Principles



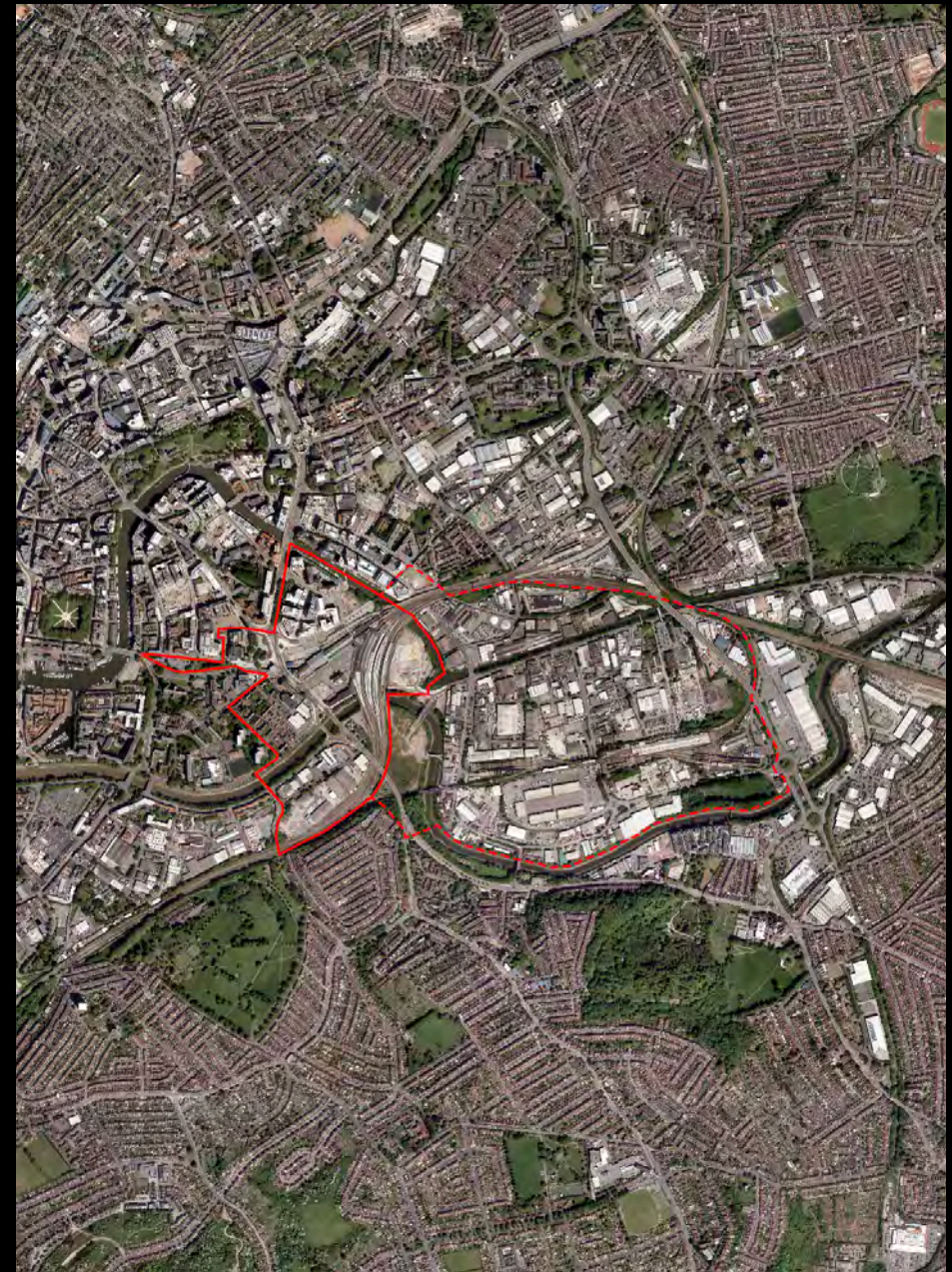
Circular diagram illustrating Bristol's unique spirits and five guiding principles.



# What is Bristol Temple Quarter?

The Bristol Temple Quarter regeneration programme is one of the UK's largest regeneration projects, transforming 130 hectares of brownfield land to deliver sustainable new homes, jobs, infrastructure and opportunities. At its heart will be a revitalised Bristol Temple Meads station, creating a world-class gateway to Bristol and the West of England. It will provide places of opportunity, such as the University of Bristol Enterprise Campus, which will have a major role in bringing state-of-the-art innovation, education and skills to the area.

The project is a partnership between four public sector organisations working together to bring transformational change. The partners are Bristol City Council, Homes England, the West of England Combined Authority and Network Rail. The partners aim to procure a private sector development partner to help drive the comprehensive regeneration of Bristol Temple Quarter.



# How to Use

## For Communities

This vision is driven by the needs, desires and big ideas we've heard from you. Over 300 people across Bristol have contributed to this document and the research that has shaped it. Together they have told us what makes Bristol, Bristol, and importantly, how the best of this should shape the future of Bristol Temple Quarter. What follows is a starting point, a slice through time from a wide range of voices. We hope it works as a common reference point for communities across the city. Its aim is to guide the principles and spirit of what makes Bristol Temple Quarter as it evolves through the years ahead.

## For Developers

This vision will be your guide to building 'Bristolness' into Bristol Temple Quarter. It's an inspiring city and demands more than an off-the-shelf approach to development. Use this to get to know the place and its values, to match our ambitions, and to understand the community's needs and desires. The tools at the back of the document will help you think and work differently to draw the sense of place into your process. Their aim is to help you achieve the communities' aspirations and achieve the radical approach to placemaking and development that this place deserves.

## For Stakeholders

To the partners and organisations involved, whether present or future, this vision will bring you back to the shared aspirations for Bristol Temple Quarter. These have been sourced from many hundreds of community and stakeholder conversations. This is a complex place and project with many voices and skills in the mix. As it evolves, this vision will become the touchstone to keep you on track as brave new ideas call to be backed, or tough decisions need to be taken. This is your foundation to ensure this development benefits the wider city-region.

# Contents

- 05–13 What Makes Bristol, Bristol?
- 14–21 What Are Our Ambitions For Bristol Temple Quarter?
- 22–39 What Makes Great Places?
- 40–64 What If Bristol Temple Quarter Becomes...?

# What Makes An Incredible Place?

The kind of place that sticks in your mind, your memory and your heart. Good places work, great places make us fall head over heels in love with them. In Bristol, we're a city with soul and depth, some wonderful traits and others we all admit we're still working on. But soul is not always easy to define, and certainly not easy for anyone building a city to work with.

Soul isn't just bricks and mortar. It draws on the character of a place and its origin story, the way that different parts of a place work together, and the ways in which people build relationships — with that place and each other over time. Can you design for that? We believe you can, and we've brought examples to the table to inspire you. It's too easy to dismiss this soft stuff because it doesn't fit into a spreadsheet or tick a box. But Bristol isn't a city that fits neatly into boxes, so we welcome this opportunity to go deeper, define what Bristol is, and what that means for the future places of Bristol Temple Quarter. We hope you enjoy taking in this vision: it's not your average planning document, but then this isn't your average city.





# 1

# What Makes Bristol, Bristol?

Bristol has unparalleled charisma and a strong-willed spirit. A place with personality, there's nowhere quite like it. Shaped by our waterways, hills and industrial heritage, given life by our creative, multicultural citizens. The traits that make up the city's spirit are part of what draws people from all over the world to live and visit, so it's important we hold onto this character. And so, as Bristol evolves, our new and revived neighbourhoods should reflect the best of the city's traits. Anyone involved in Bristol Temple Quarter going forward should soak up the unique sense of place (our definition of USP) and embed it in what they're doing and how they're working. We love Bristol; let's keep that love alive.



# How to Use Section 1

Too often, placemaking terminology falls into the generic, failing to capture what's at the core of the place described. This work aims to get specific by identifying Bristol's distinct, unique and quirky qualities, while reflecting them in Bristol Temple Quarter. Ask yourself whether the placemaking moves you're developing reflect Bristol's character. If you think they could be anywhere else, how might you make them more Bristol? Get talking to local people about what these words mean to them, where and how they see them in the streets, buildings and experiences that shaped and continue to shape Bristol's identity as a place.

## For Communities

This section sets out to make sure that what's built is the city we know and love. Ask yourself whether the placemaking moves that are shaping up feel like they reflect the character of local people and the personality of the city. Do they make you proud to be from Bristol? Then we're on the right track.

## For Developers

Too often, placemaking terminology falls into the generic, failing to capture what's at the core of the place described. This work aims to get specific by identifying Bristol's distinct, unique and quirky qualities, while reflecting them in Bristol Temple Quarter. Ask yourself whether the placemaking moves you're developing reflect Bristol's character. If you think they could be anywhere else, how might you make them more Bristol?

## For Stakeholders

Get talking to local people about what these words mean to them, where and how they see these qualities in the streets, buildings and experiences that shaped and continue to shape Bristol's identity as a place. Consider how these promote a more distinct reputation for the city as a whole.

## Our Key Characteristics

- **Diverse Culture**
- **Independent Thinking**
- **Creative Spirit**
- **Historic Fabric**
- **Natural Beauty**

What follows are 5 key characteristics that make this city so special, and a consideration of what this means to placemaking. These were drawn from a series of interviews, workshops and from a citywide engagement that drew in many hundreds of responses. And being a city that thinks outside the box, there were some weird and wonderful outliers that we think are important to take note of.

# Bristol is...

Alternative \* Progressive politics \* Colourful houses \* Unpredictable \* Parks \* Caring community \* Floating harbour \* Park row bollards \* Money spent on Beacon rather than on protecting the city from flood risk \* Natural features \* Youthfulness \* Adaptability \* Some good streets \* Independent eateries \* Busy \* Imaginative \* Clifton Bridge \* Not balloons \* Gridlocked \* Tolerant \* Wet \* Old \* New \* Brunel \* Concorde \* Emancipatory \* Rebel \* Smorgasbord of style \* Feistiness \* Radical \* Guttural \* Embrace \* Eclectic \* Economic division \* Capital \* Street art \* Spice \* Water \* Cabot Circus \* Public Services \* Speaks for itself \* Terrible Traffic \* It feels like a big village \* Heritage \* People are brilliant \* West country accent \* Anarchism \* Different people meet up and come together \* Not as English as other cities \* The first to challenge inequality \* Divided \* Anything goes \* Cider \* Expensive \* My home \* Disunity \* Wallace & Gromit \* Somali Food \* Freedom \* Mosque \* Stokes Croft \* Carnival \* Boring \* Chilling \* Slow \* Bear Pit \* Night life \* Cosmopolitana \* People get along \* Small but big \* Lush \* A challenge to the status quo \* Regional dialect \* Laid back \* Creative hubs \* A welcome city \* Well known animations \* Socially aware \* Authentic \* Social \* Proud \* Passionate \* Supporting religions \* Left wing \* Brilliant \* Bristol Museum \* Atmospheric \* Thekla \* A feeling \* Principled \*





St Paul's Carnival, St Pauls, Bristol

# Diverse Culture

In Bristol, we celebrate our people and their cultural heritage, making space for voices from all corners of the world to find their home. Bristol's long-established populations, like the Caribbean community, have been vital in shaping the cultural scene we're proud of. The birthplace of drum and bass and trip-hop music, the lively St Paul's Carnival has roots in African-Caribbean culture. Our history of intercultural exchanges of sound, aura and flavour has made us the diverse city we are today, with people who relate to each other with dignity and respect. You'll see that in the brightly painted houses that reflect the personalities of those that live there; in the multicultural streets that we cherish like St Marks Road; and the way we plan our city to welcome everyone.

## For Placemaking This Might Mean:

- + Ensuring your team is diverse in age, cultural background, expertise and ability to draw wider perspectives into placemaking.
- + Drawing on a genuine diversity of voices into the process through placemaking panels. Always start your process by building empathy, asking 'who's missing?' and making space and time for others throughout the development process.
- + Building opportunities for expression of multiple identities and 'speaking back' into placemaking moves. Which spaces can people take over to make theirs?



# Independent Thinking

In Bristol, we make our voices loud and clear, inspiring change. Independent thinkers and passionate doers — we're proud to stand up for what we believe in. Among our most popular public spaces are places of protest and street art, informal symbols of our city. Yet this place we care so passionately for is one of contradictions, home to some of Europe's wealthiest and most deprived areas. There's still work to do. Our spirit of advocacy has been alive since the bus boycott — the first black-led nationwide campaign against racial discrimination. In 2020, the same energy inspired thousands of kids to skip school to join a climate strike. Radical or necessary? Whatever you call it, we don't settle for the status quo and hold our partners to the same standards.

## For Placemaking This Might Mean:

- + Ensuring equity and inclusive growth underpin all placemaking to counter the city's long standing social, racial and economic inequalities.
- + Establishing platforms for divergent opinions in the planning process to share project challenges and draw on expertise, such as a community of critical friends.
- + Making space for people to act on the things they care about and work with their talents in self-organising: from sustainability to arts to social justice.







Up Fest on North Street

# Creative Spirit

In Bristol, we're original, radical thinkers. With a positive and practical spirit, we test and try new ideas, making this a fertile place for innovation. From art to engineering, this is a place where the experimental and underground become the norm. You'll see it on the streets through the street art and graffiti that paint the town in a myriad of colours; a music scene that's put the city on the global map; and our love of cultural festivals that draw on a can-do attitude. We're creatively tenacious, the same type of creativity that drove Isambard Kingdom Brunel to envision engineering masterpieces and Banksy to change the art game. Courageous, challenging. It means Bristol Temple Quarter will be game-changing.

## For Placemaking This Might Mean:

- + Involving artists and creative disciplines beyond the realm of planning and development in the process. For example, working with city poets, photographers, musicians and filmmakers to understand and celebrate Bristol's sense of place.
- + Ensuring that you protect and maintain space for creative practices as land values rise. For example, housing for creatives and studios under a community lock.
- + Working moments and spaces of creative celebration into the development. For example, an infrastructure for festivals that makes hosting creative events easy.



# Historic Fabric

In Bristol, our built environment tells our story. Founded between the Frome and Avon rivers, Bristol started as a market town that, over the years, saw an explosive history of exploration, trade, harbours, villages, slave trade, innovation, wars, riots, arts and music scene and climate action. Bristol Temple Meads station is home to architecture and infrastructure of national and international historical significance. Other iconic structures (take the Suspension Bridge or Bristol Harbourside) define our city's character and contribute to the personalities of the surrounding neighbourhoods. Aiming to retain and remember our history and its ups and downs through our buildings, we're at a pivotal moment for the city's identity as we grow again. This time, we want to engage meaningfully with history through our building fabric and public spaces.

## For Placemaking This Might Mean:

- + Repurposing heritage assets as cherished civic spaces that offer everyone access and embed material recognition of local histories in new building.
- + Building relevant past stories and heroes into street and building names to support the city's narrative.
- + Embedding opportunities for people in Bristol to shape which stories are celebrated.







# Natural Beauty

In Bristol, we're gifted with water bodies and landforms that are breathtaking and biodiverse. Just a few miles from our city centre, the Avon Gorge, Clifton Down, Durdham Down and Leigh Woods are home to a wealth of natural beauty and wildlife. These places make it hard to imagine you're in a city. We've always been surrounded, immersed and captivated by nature. Our deep appreciation for nature took us in 2004 to become the first UK city to develop a climate strategy, in 2015 to be crowned as European Green Capital, and in 2018 to become the first UK city to declare a climate emergency. We have an ambitious goal to become carbon-neutral by 2030. Ambitious, yes. But we've always been that way. Only 2% of the land in Bristol Temple Quarter is green space. So we see an opportunity to enhance the blue, the green, and the lush, making Bristol Temple Quarter a haven, a sanctuary for all lives.

## For Placemaking This Might Mean:

- + Growing our grey spaces into greenspaces to ensure nature is core to Bristol Temple Quarter's future.
- + Embracing the blue in Bristol Temple Quarter and restoring waterways as spaces for leisure, rest and a thriving ecology.
- + Introducing and maintaining quiet and sensory spaces for nature to recover and to meet different needs for mind and body.

# 2

# What Are Our Ambitions For Bristol Temple Quarter?

A good vision offers a clear sense of purpose that brings together all those that will shape a place's future. It answers 'why here?' and defines what makes this place special; 'why now?' framing the pivotal moment to take forward this opportunity; and the 'why us?' establishing the strengths of this partnership, our stakeholders and communities.



# How to Use Section 2

This section is your North Star. Use it to refer back to the place and project purpose when taking decisions to ensure you're on track. Look back at your ambitions when taking decisions and setting KPIS, to ensure you're reaching the potential of the project.

## For Communities

This vision sets shared aspirations and highlights the impact that Bristol Temple Quarter sets out to have on the neighbourhood, city, region, and world. It helps you consider how the projects you're working on at a local level can have a big impact as they scale. In doing so it elevates the work you do.

## For Developers

This vision sets an ambition that our communities and stakeholders have expressed. It's important to return to this section regularly to ensure that the places you're making support these impacts. At the end of the day, it will make your developments distinct and well-loved, adding value for everyone.

## For Stakeholders

The 'why' is drawn from our interviews with you, with partners, and with local people. It gives you clear language to communicate the value of Bristol Temple Quarter to others. It's a useful tool to build further partnerships.

# THE VISION

**Bristol Temple Quarter will bring a warm welcome to the heart of this incredible city.** This is a community built on partnership, designed with people, for people — where everyone can find their place and feel at home. It welcomes the nation through a renewed Bristol Temple Meads station, fit for the 21st Century — a neighbourhood that celebrates our **historic fabric** yet is designed for a fast-changing future.

**This is a place with foundations built on equity and inclusivity.** Bristol Temple Quarter will focus on the delivery of high-quality new homes in the right places, with affordability at the heart of everything we do. An engine for sustainable and inclusive growth, it's where small ideas and big innovations get off the ground and generate well-paid, skilled jobs for everyone. This is a place that is united but not uniform, full of buildings, spaces and programmes that celebrate our city's **diverse culture** and **creative spirit** — setting a gold standard for community-focussed placemaking.

It's a haven for our city's **natural beauty**, a place that revives greenspaces and waterways for all life to thrive. And together with the housing and infrastructure that it delivers, this place will enable people to live low-impact, sustainable urban lives. Bristol Temple Quarter draws on our city's **independent thinking** to develop places with a difference, making positive change for our people and the planet.

# BRISTOL TEMPLE QUARTER WILL...

- Be Welcoming, Accessible & Just
- Embrace Heritage, Adaptation & Evolution
- Focus on Creating and Supporting Thriving Communities
- Enable Meaningful Connections
- Provide Affordable Housing
- Be a Resilient & Flexible Development
- Be Hospitable Towards Local Communities
- Prioritise People & Planet
- Earn People's Trust & Hearts
- Be True to Bristol

# WHY HERE?

**Bristol is the largest city in the South West and the second fastest growing of the UK's eleven core cities.** Bristol Temple Quarter will become the epicentre of one of the UK's most productive regions and a focal point for the West of England's £39bn economy. The city's historic legacy and distinct character will enrich the development.

Driven by the University of Bristol's Enterprise Campus, Bristol Temple Quarter will attract new partnerships and research collaborations of global significance, strengthening Bristol's economy and tradition of innovation. This development is key to supporting the university's ambition of meeting its Carbon Net Zero target by 2030 (University of Bristol Vision and Strategy 2030) through high-quality green infrastructure while encouraging low-impact lifestyles.

In the spirit of this bold city, Bristol Temple Quarter will be catalysed by inclusive growth, making sure the neighbourhood truly offers accessible employment pathways. Bristol is home to an ethnically diverse population, which will only change and increase as the city evolves. There are now at least 287 ethnic groups in the city, with 185 countries of birth represented and 90 languages spoken (The Population of Bristol, 2023). Bristol Temple Quarter is an opportunity to embrace inclusive growth, creating a ripple effect of opportunities for all, including young, old and everyone in between.



The original Brunel Temple Meads station, the Digby Wyatt joint station, and the Main Shed and Culverhouse extension are Grade I listed buildings

---



The University of Bristol's Enterprise Campus will offer 9,300m<sup>2</sup> of teaching and study space, 4,200m<sup>2</sup> of cutting-edge research labs and 2,500m<sup>2</sup> for enterprise partners

---



St Pauls Carnival, a celebration of multiculturalism and Caribbean culture, welcomes tens of thousands of visitors annually (at least 90,000 in 2018) into the city

---

1. Bristol Temple Quarter Website
2. University of Bristol website
3. St Pauls Carnival Economic Impact, 2018



# WHY NOW?

**The scale of Bristol's housing crisis is monumental.** Bristol residents need almost twelve times their annual salary to buy a house (Bristol Living Rent Commission, 2023). The housing market is simply off-limits for many. The steady increase in house prices drives locals out of their life-long communities. The most affected are, of course, our most vulnerable residents.

**There's been no better time to build more homes.** At least 20,000 people on the council waiting list. Bristol Temple Quarter aims to deliver 10,000 new homes, a significant portion of which will be affordable. Our inclusive economic growth strategy will set the path to creating new skills and thousands of jobs for local people, bringing renewed opportunities to our communities.

**The case only strengthens with the city's booming population,** projected to increase by 69,300 people over the 25-year period (2018-2043) to reach a total population of 532,700 by 2043 (The Population of Bristol, 2023). In the face of an increasingly diverse city, diversity and inclusion will remain the pillars of our approach to development.

**We also need to be proactive in the face of the climate crisis.** Uncertainty and climate instability will present unique challenges to Bristol and the West of England. Our winters will be wetter, and our summers will be dryer. By embedding long-term value and resilience in what we build, we will make sure that Temple Quarter is a place that will stand strong, adapt and serve present and future generations.



Since 2011, private rents in Bristol have increased by 52%, while wages have only risen by 24% over the same period

---



In Bristol, more than a quarter of households (over 134,000 people) rent privately, which is higher than the national average (20%)

---



Under a high emissions scenario, by 2080, the sea level on Bristol's coastline could be expected to increase by up to +72 cm, while the summer maximum temperature could increase by over +9°C than it is today.

---

1. Bristol Living Rent Commission, 2023
2. Bristol Living Rent Commission, 2023
3. Bristol One City Climate Strategy, 2020

# WHY US?

**As partners, we're driven by the potential Bristol Temple Quarter will bring to Bristol and the West of England.** We have collective strength in infrastructure, real estate, innovation and land. Our position allows us to access finance and key institutions to make sure we have the right support throughout the development lifecycle.

**As leaders, we bring a deep understanding of the region and its needs.** Our track record of delivering ambitious public sector projects across the region strengthens us. We see this project having a transformative impact in Bristol and the West of England and playing a strategic role for the nation.

**As citizens, we care, learn and listen.** Bristol is a value-led city with a burning civic heart. As such, we will choose partners who share the same principles as we do and match our ambitions with a lasting impact for future generations. We want everyone to enjoy their city and the opportunities it brings by ensuring equal access and opportunities for many.

As we make decisions, we remind ourselves of these different roles and the ambition that this development should serve all. We envision Bristol Temple Quarter as a source of hope in an uncertain world. This paradigm shift in development aims to create a resilient, forward-looking blueprint for urban change.



A total investment of around £500m has been made on the University of Bristol's new Enterprise Campus, which is estimated to deliver around £626m of employment and financial benefit to the regional economy over the next decade



So far, £94.7m funding has been secured for the Bristol Temple Quarter regeneration programme



By 2030, 95,000 jobs are expected to be created in the region

1. University of Bristol, 2021
2. Bristol Temple Quarter, 2022
3. West of England Strategic Economic Plan 2015-2030



# Where We Can Impact

## Neighbourhood

Consider the neighbourhood's roots and celebrate its cultural heritage.

Empower communities to continue to shape local life and the neighbourhood.

Integrate more healthy and inviting ways to get around.

Promote participatory processes with local communities, for the long-term.

Welcome and benefit from culturally diverse communities and neighbourhoods.



## City

Become a destination that builds on Bristol's cultural assets and celebrates its communities.

Retain and repurpose Bristol's historical and cultural heritage.

Promote healthy modes of getting around the city by improving the street experience and enabling meaningful, accessible connections.

Engage an intergenerational audience by providing opportunities that are inclusive and enabling for all – particularly young people and senior citizens.

Knit the city and region together, encouraging greater integration between surrounding areas.

## National

Become the inclusive growth capital of the South West, integrating social and spatial justice KPIs into our mission.

Establish our place as an exemplar of inclusive urban regeneration and climate resilient infrastructure in Europe.

Support the region's position in enabling opportunities and nurturing talent, through high-quality education and research activities.

Open the gateway to the South West, enabling visitors and residents to easily move between the city, region and country.



## Planet

Position ourselves as leaders in delivering on global sustainability goals by investing in transformational infrastructure and resources.

Promote nature-based solutions that evolve and adapt to the changing climate, aligning with the city's climate strategy.

Repurpose existing fabric as far as possible, focusing on retrofitting current buildings to enable better energy infrastructure and performance.

Bring forward the city's flood strategy at pace by integrating and maximising green infrastructure.



# 3

# What Makes Great Places?

Great places come in all shapes and sizes. Yet there are common principles that unite them. They're easy to get around and plug into the wider city. They enable everyone to reach their potential through affordable spaces, education and jobs. Good places respect heritage yet are poised for the future. They're alive with nature and generous public spaces to enjoy. And they're places shaped by their creative communities. This holistic approach to shaping places draws these common traits together. Temple Quarter will express them in a way that is uniquely Bristol.

# How to Use Section 3

Bristol Temple Quarter follows five Guiding Principles: Integrated & Connected, Inclusive Economic Growth, Brilliant Buildings, Quality Open Spaces and Vibrant & Creative Communities.

Each guiding principle is unpacked through a series of opportunities and aspirations for placemaking. They guide you to develop a holistic place across different scales, timescales and costs, and we offer an example of a good place where this has happened. The accompanying Placemaking Toolkit supports this section and contains further case studies to expand upon what a good place can mean.

## For Communities

Come back to these five principles to sense check that the plans you're a part of add up to a well-balanced place. Work with the Bristol Temple Quarter partners and developers to determine which you would like to share ownership of or take on yourselves.

## For Developers

Factor financing and delivery of these placemaking ideas into your plans. Consider which will impact the communities and your development by bringing a uniquely Bristol spirit to the place.

## For Stakeholders

Make an action plan for 'now, near and next' and establish how you can work with developers and communities to deliver these. Start with small placemaking ideas that can scale over time.



## Our Guiding Principles

- **Integrated & Connected**
- **Inclusive Economic Growth**
- **Brilliant Buildings**
- **Quality Open Spaces**
- **Vibrant & Creative Communities**

After wide public engagement and consultation from 2018 to 2019 and subsequent feedback between July 2022 and March 2023, the Bristol Temple Quarter team identified five key components important to the community. Together, they make up a holistic view of a place. We've taken these five guiding principles from within the Bristol Temple Quarter Development Framework and built upon them during the visioning process to make them more specific to Bristol, The West of England and Temple Quarter. The five guiding principles will help shape change for the future.



© [Antonio Rodriguez] / Adobe Stock

# INTEGRATED & CONNECTED

**Sustainable and low-impact mobility that gets people together and around easily.**

Connections are good for us. Integrated and connected places are not only easy to get around, they benefit the planet and are great for our social life. Bristol Temple Quarter will make transport comfortable and convenient. With greenways to walk, run, wheel and actively move around the city, they will build Bristol's reputation as a green pioneer. Public transport and sustainable travel are better for our air quality and reduce stress levels — even making the commute fun! Importantly, these modes of active travel connect us with others, bringing friends and family closer together.

## Placemaking Opportunities

- + Empower individuals to navigate the city with independence.
- + Host safe, well-lit paths for any time of day or night.
- + Celebrate water and nature as part of the journey.
- + Integrate travel that is inexpensive and inclusive to all.
- + Act as places for people to hang out at all stages of life.



Examples:

**Now**



**Near**



**Next**

Visually map every neighbourhood to Temple Quarter, through designs on the floor and surfaces in public realm.

Improved and accessible signage and lighting in one or more languages that creates agency at all ages. Include signage designed with and for children.

Regular and reliable transit that can get people across town in 30 minutes or less.



# BRICKLINE GREENWAY

## ST LOUIS, USA

*Bike, walk or run wild along 10 miles of greenways that criss-cross the city of St Louis. Becoming a part of every citizen's joyous everyday, it connects people to their schools, workplaces, neighbourhoods, civic and cultural institutions and new spaces to discover along the way. Driven by community, for community, it's where nature and diversity unite.*

This urban greenway is a 10 mile network of accessible biking and walking paths that connect through 14 neighbourhoods. A public private partnership driven by Great Rivers Greenway, this project stands out for its emphasis on equity, diversity and inclusion (EDI). Established in 2000 through public support and a dedicated sales tax, and steered by a diverse board and numerous partners, it incorporates extensive EDI efforts, ensuring the greenway reflects the region's diverse community. The project notably impacts local communities, particularly through the Greenway Goods project, which fosters community engagement, supports local artists, and promotes sustainability, significantly contributing to the region's civic, social, and economic fabric.

What Makes Great Places?



Images supplied by Great Rivers Greenway





© [Antonio Rodriguez] / Adobe Stock

# INCLUSIVE ECONOMIC GROWTH

**Productivity-driven growth with fair distribution of economic contributions and benefits.**

As a place comes up, it's important that we all benefit from the opportunities it offers. In Bristol Temple Quarter, economic opportunities will be equitably distributed, giving local people stability and a say in their own destiny, whatever the future holds. It will offer us new ways to learn, get educated and improve our skills; new ways to get a good job or start a business; and affordable ways to live, because everybody should have the right to a good, long-term home. Bristol rarely accepts the status quo, so Bristol Temple Quarter will be a place that seeks innovative solutions to tackle the housing, climate, flooding and employment challenges, attracting global business and home-grown talent at its best.

## Placemaking Opportunities

- + Prioritise affordability and accessibility of spaces.
- + Promote a range of local and independent businesses.
- + Encourage community give-back initiatives and funding.
- + Recognise the importance of grassroots organising.
- + Offer training to access a wide range of opportunities.



Examples:

**Now**



**Near**



**Next**

Showcase local startups in Bristol, including neighbours of Bristol Temple Quarter and those under-represented across other Bristol enterprises. With them, initiate a series of Bristol Temple Quarter and neighbour partner pilots.

Businesses offer youth concessions that are pocket-money friendly. Offer after-school cafes in the University of Bristol Temple Quarter library once or twice weekly.

Require all enterprises with offices in Bristol to comply with B-corp principles and to invest in sustainable practices and community initiatives for the Bristol Temple Quarter area.



INCLUSIVE ECONOMIC GROWTH

SCALE: LARGE

# HALLE FREYSSINET STATION F

PARIS, FRANCE

*A historical gem turned innovation powerhouse, Station F blends the spirit of entrepreneurship with architectural splendour. Station F is where ideas grow, and the future is shaped, right in the heart of Paris.*

Halle Freyssinet, now Station F in Paris, is a striking example of architectural revival and innovation. Funded by Xavier Niel and housed in a 1927 building, it's Paris's largest start-up campus, accommodating 1000 start-ups in a 34,000 m<sup>2</sup> space. The historic structure's transformation into a modern entrepreneurial hub involved sophisticated enhancements for energy efficiency while preserving its heritage. This vibrant ecosystem includes workspaces, a prototyping lab, an auditorium, and public dining facilities, exemplifying successful urban regeneration. Station F stands as a beacon of innovation and a testament to the fusion of historical preservation and contemporary urban development.

What Makes Great Places?





© [Antonio Rodriguez] / Adobe Stock

# BRILLIANT BUILDINGS

**Future-proofed buildings with a distinct character, a diverse cultural identity and a strong heritage.**

Great places build on the story of a city, making it relevant to today and tomorrow. The buildings in Bristol Temple Quarter will aspire to distinct, world-class design. They will celebrate the city’s history of innovation and cultural diversity, yet stay fit for a fast-changing world. The area’s heritage, particularly the Grade I listed station, will develop a sense of place that is truly ‘Bristol’. A balanced mix of buildings will provide homes and community places, making Bristol Temple Quarter a place where everyone enjoys spending time.



## Placemaking Opportunities

- + Welcome all who enter and foster a sense of community.
- + Blend heritage and character to celebrate local people and stories, past and future.
- + Reflect and support unity across rich non-uniformity.
- + Inspire exploration and joy.



Examples:

### Now



### Near



### Next

Public spaces, libraries and community venues to host blended programmes that bring together people from all backgrounds, at no-to-low cost with help from local volunteers and collaborating organisations.

Streets and parks are renamed or newly named to reflect the community and promote inclusivity. Community leaders are recognised through murals or on paving stones throughout the quarter.

New food halls and low-cost eating places are created in Bristol Temple Quarter that act as places to hang out and socialise and reflect the diverse foods and cultures of Bristol in a welcoming and accessible manner.



BRILLIANT BUILDINGS

SCALE: LARGE

# WESTERN HARBOUR CITY

MALMÖ, SWEDEN

*Amid lush greenery, tight-knit community life, and beautiful beachfronts, Western Harbour, has turned around the fortunes of a former industrial area. Daring yet sustainable architecture weaves around the neighbourhoods' canals, ponds and watercourses; the beachfront is packed with restaurants, bars, cafés and clubs in the summer; and epic views across the sound to Denmark offer long shoreline walks.*

Western Harbour epitomises the successful transformation of a polluted industrial area into a sustainable and vibrant urban neighbourhood. Over the years, it has evolved into a community rich in residential areas, businesses, green spaces and a picturesque beachfront. At its core, Western Harbour embodies sustainability, utilising solar and wind energy, innovative water storage and eco-friendly transportation. This commitment to sustainability aligns with Malmö's goal of achieving 100% renewable energy by 2030. Western Harbour stands as a leading example of how urban areas can be revitalised to create sustainable, livable communities while embracing the built heritage of the area.

What Makes Great Places?







© [Antonio Rodriguez] / Adobe Stock

# QUALITY OPEN SPACES

**Dynamic public spaces that blend culture and nature into the fabric of the city.**

Great public spaces are the life of the city, keeping energy flowing through the parks, waterways and streetscapes. Bristol Temple Quarter will be defined by great outdoor public spaces. Plazas and parks will celebrate Bristol's world-renowned cultural scene and natural settings, offering spaces to relax. We'll celebrate our city's connection to the waterways with new canalside spaces that get us closer to nature, while supporting active travel and flood defence.

## QUALITY OPEN SPACES

# Placemaking Opportunities

- + Refresh residents with a bounty of green spaces.
- + Encourage play, if it works for kids it works for everyone!
- + Meet a diverse set of community needs.
- + Protect people and planet with safe and sustainable designs.

Examples:

## Now



## Near



## Next

Residents invited to contribute songs to playlists for each neighbourhood to build the sounds of Bristol; The Bristol Temple Quarter Birdsong Collection promotes a deeper connection with quiet and natural spaces.

Pocket parks, play streets and places for community prototyping are added between developments to give space to breathe.

Every summer a piece of the river and canal opens up for swimming lessons and water activities.





QUALITY OPEN SPACES

SCALE: MEDIUM

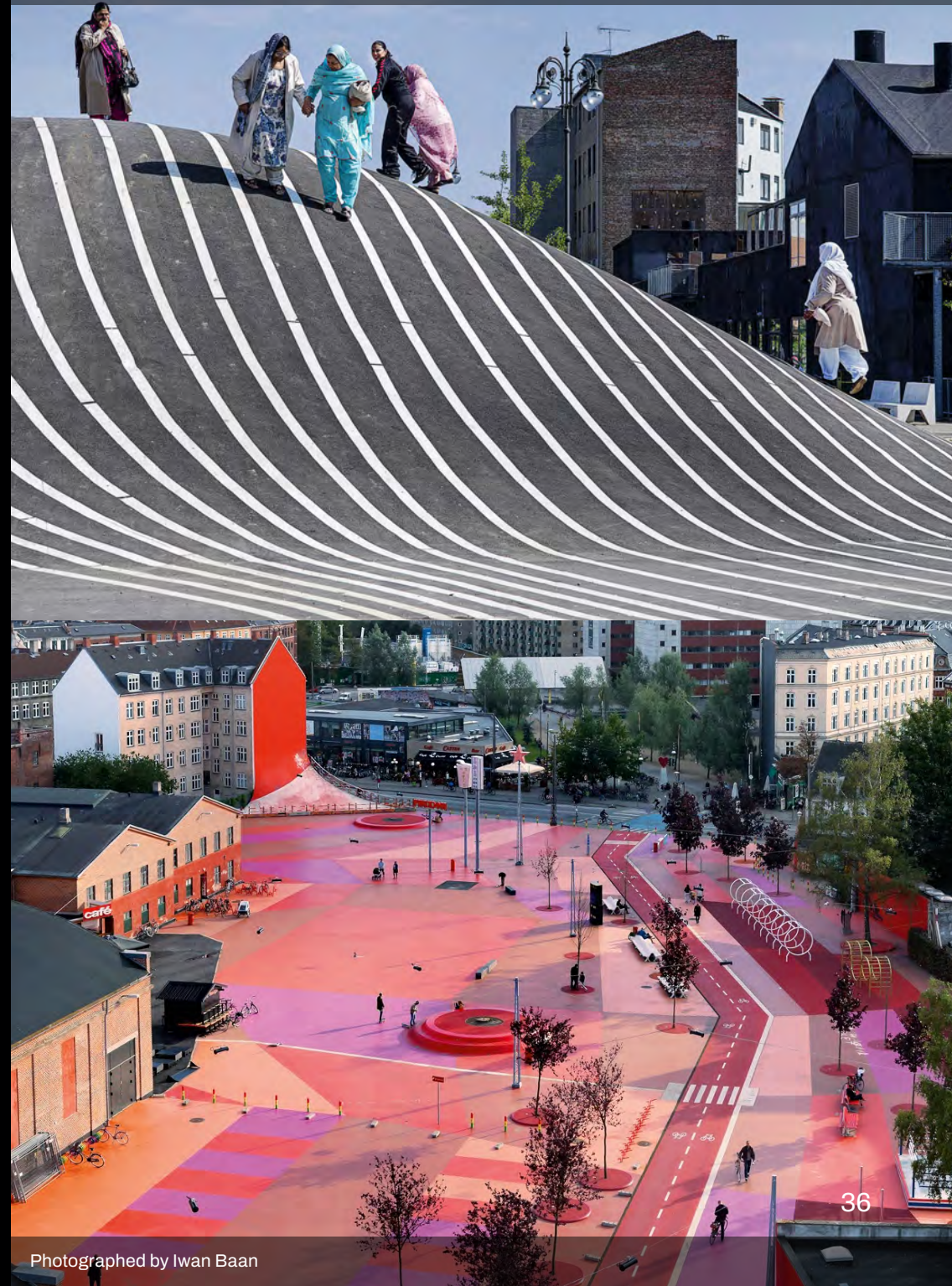
# SUPERKILEN

## COPENHAGEN, DENMARK

*Bright, bold and designed for everyone, Superkilen is a living testament to diversity and creativity. This remarkable urban park and playground was co-designed with residents to ensure a mosaic of cultures unfolds, representing the global origins of local people. Explore the Red Square's energy, the Black Square's communal charm, and the Green Park's leisure. This is a celebration of diversity!*

Superkilen in Denmark is a unique urban space that transcends traditional park design, showcasing global diversity in one of Copenhagen's most ethnically diverse neighbourhoods. Developed by BIG, Topotek1 and SUPERFLEX, it features objects from 60 nationalities, creating an outdoor exhibition of global culture. The park is divided into three zones: the Red Square for culture and recreation, the Black Square as a communal living area, and the Green Park for sports and leisure. Superkilen celebrates cultural diversity, redefining urban public spaces, and serves as a model for integrating global cultural elements into local urban environments, enhancing community interaction and social cohesion.

What Makes Great Places?







© [Antonio Rodriguez] / Adobe Stock

# VIBRANT & CREATIVE COMMUNITIES

**Community potential enabled through inclusive and meaningful spaces to live, work, learn and play.**

Creative cities should encourage everyone to express themselves and their passions. They are charismatic, rich in shared spaces where independent thinkers rub shoulders, trade ideas, and make things happen. Bristol Temple Quarter will be full of inspiring workplaces, well-designed housing and cultural spaces for people with different skills to come together, whatever their background. These spaces will activate Bristol's communities, from nightclubs to maker-spaces, film schools to street art. Inclusive and affordable spaces will ensure that creativity flourishes as the neighbourhood grows.

## Placemaking Opportunities

- + Brim with stories told in languages from around the world.
- + Facilitate spaces for creativity that highlight the artist and the art.
- + Weave strands of histories into harmonies.
- + Invest in local talent by involving communities in the renewal of public spaces.



Examples:

### Now



### Near



### Next

Initiate 'Neighbourhood of Stories' programme, to capture and reflect local people, places and accounts through creative and inspirational interpretation, artworks and events.

Transform the canalside of Feeder Road into an enjoyable riverwalk with colourful walls along the industrial road. Sections of Temple Quarter are designed by kids for kids with colourful paths connecting the spaces for easy navigation.

Greenhouse Temple Quarter is an accessible and affordable network of spaces to host community events, arts and celebration.



VIBRANT &amp; CREATIVE COMMUNITIES

SCALE: MEDIUM

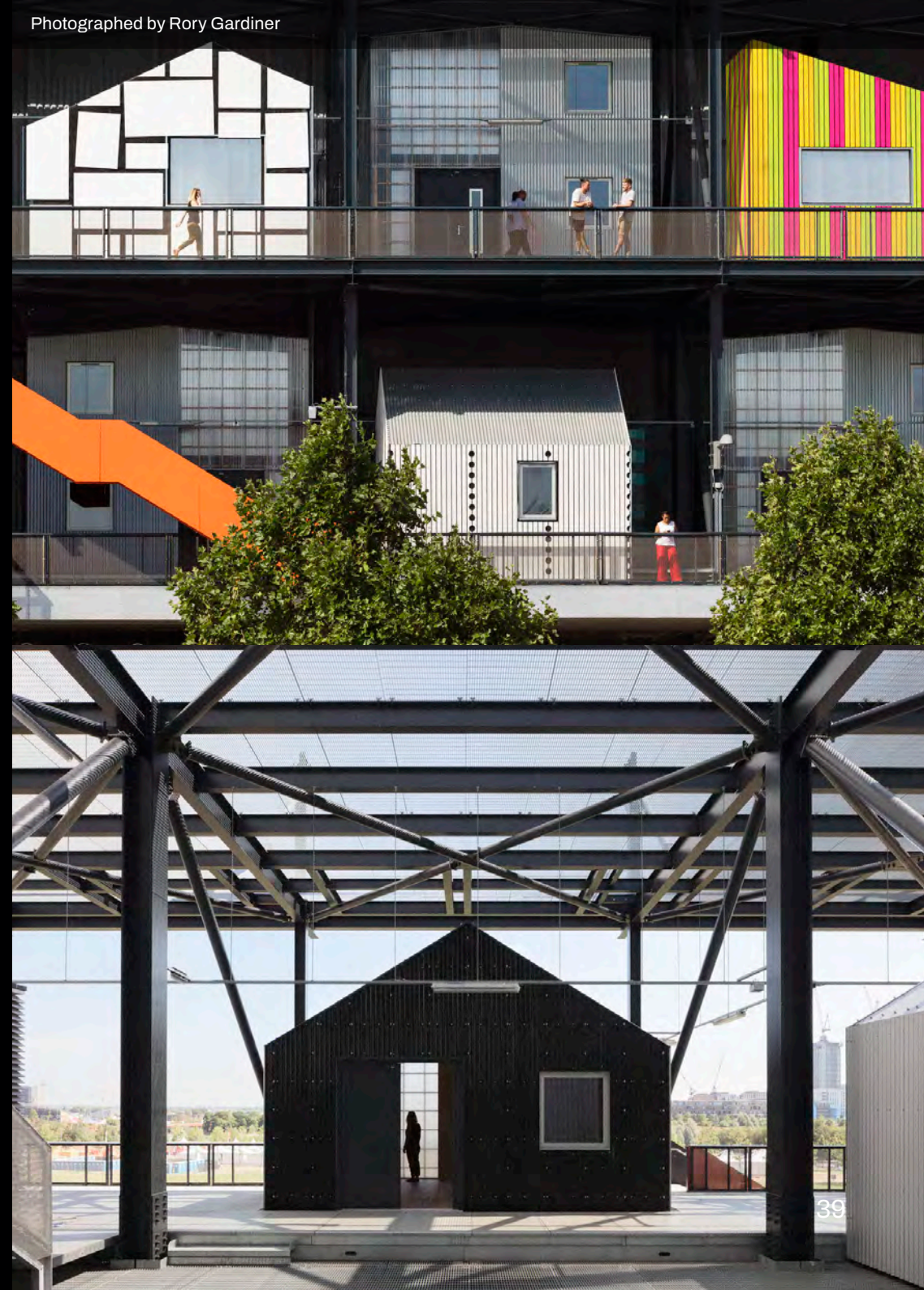
# THE TRAMPERY ON THE GANTRY

LONDON, UK

*Stepping into The Trampery on the Gantry, is like walking into a weird and wonderful creative lab. Located at Here East, London's Home for Making, it's tucked between the canals and warehouses of Hackney Wick, and the vast open spaces of the Olympic Park.*

The Trampery on the Gantry in London, a creative redevelopment of the former Olympic press and broadcast centre, is a symbol of sustainable urban innovation. Led by Hawkins/Brown, it comprises 21 unique studios constructed using open-source WikiHouse technology, reflecting the historical essence of Hackney Wick. This project has transformed a piece of the Olympic legacy into a dynamic hub for local businesses and startups, fostering economic growth and community development. Its distinctive approach to architectural design and sustainable construction stands as a model for adaptive reuse and contributes significantly to the area's revitalisation and cultural enrichment. Described as 'London's most exuberant low-cost studios and desk space for creative businesses and artists,' it's a tribute to Hackney Wick's heritage as a place where things have been created and made.

What Makes Great Places?







# 4

# What If Bristol Temple Quarter Becomes...?

A small question with big potential. Bristol is a creative city. We combine an independent thinking that doesn't accept the status quo with a pragmatism that gets things done. We always look for possibilities to do things differently and open up new opportunities. By asking 'What if...?' we establish what we want this place to be like and the rationale behind that. The following placemaking briefs are speculative visions for a future Bristol Temple Quarter that serves all. It aims to guide the work that needs to happen, establish how to achieve these visions and bring these places to life.

# How to Use Section 4

We've drawn these placemaking briefs from public engagement. Use them to paint a picture of what the place could feel like and set out to achieve in the future. Draw on the components of 'what this might mean' to make that picture a reality. We know Bristol Temple Quarter will face design challenges as the project evolves, so there are many ways to achieve these aims. Some are not easy, and you'll need to apply a creative approach to get there.

## For Communities

Asking 'What If...?' is a way to bring bold placemaking ideas and important questions to the table. Asking these helps you start a conversation with other groups, stakeholders and developers. They become briefs for placemaking, and together with others you can work through possible ways to bring these ideas to life.

## For Developers

We ask 'What If...?' to get you to think differently and respond to community and stakeholder aspirations. These projects, programmes and places are often simple to deliver and enable you to pilot new ideas in quick and low-cost ways with the public. Delivering these can add huge value to the development, and build positive sentiment around your work.

## For Stakeholders

These 'What If...?' briefs capture community creativity and aspirations. They are a great way to move beyond planning policy to deliver a place that exceeds expectations. Work these into an action plan to define priorities. Use your role to build partnerships to make these happen. And start a 'placemaking pilot' programme that helps the successful ideas scale for the long term.



## What if Bristol Temple Quarter... Connected people, not just places?

In Bristol Temple Quarter, getting around is about getting together and supporting healthy, fulfilling lives. Our integrated transport system goes beyond improving public transport infrastructure, services and traffic management. It recognises that connectivity will enable people to access jobs, education and opportunities for personal development. From embracing our canals for walking, boating, cycling and fishing to making it clean, green and easy for everyone to find their way around. In doing so, we also improve the safety of travel options, including child-friendly wayfinding for kids to go to school safely and accessible pathways for our elderly and disabled residents.





INTEGRATED & CONNECTED

## What if Bristol Temple Quarter... Looked outward, not inward?

In Bristol Temple Quarter, we're inspired by people and places from around the world, the West Country and the city. While we value the local, we're open-minded, with big horizons and aim to think outside our neighbourhood. Bristol Temple Quarter is known as a place that cares for, learns from and welcomes its neighbours and all they've already achieved. Connecting to the UK, welcoming the world. Equally, we build from the margins to the centre (not the other way around), designing with those from different backgrounds, abilities and mobilities to include everyone.



## What if Bristol Temple Quarter... Was as safe to travel at night as it was by day?

In Bristol Temple Quarter, phased licensing, safe routes designed with women and access groups, and easy mobility around the clock (active and public transport) make the place thrive not just by day but also for more than 116,000 people or 41% of Bristol's jobs (Bristol Nights) who work and use the area between 6 pm and 6 am every day (Bristol Nights). Delivery drivers, care workers, partygoers, food kiosk owners, bar staff, refuse teams, all-night gym users, people using public toilets, locals walking home alone, women and the elderly—everyone—feel safe and provided for thanks to the quality and care of Bristol Temple Quarter mobility by night. The quality of Bristol Temple Quarter housing stock means there are no issues with noise for those who are most active by day, whilst the area bustles by night. Movement-responsive lighting is designed to accommodate bats, people on the move, and those asleep.





# Why This is Important

37.5% of Residents are satisfied with the local bus service

---

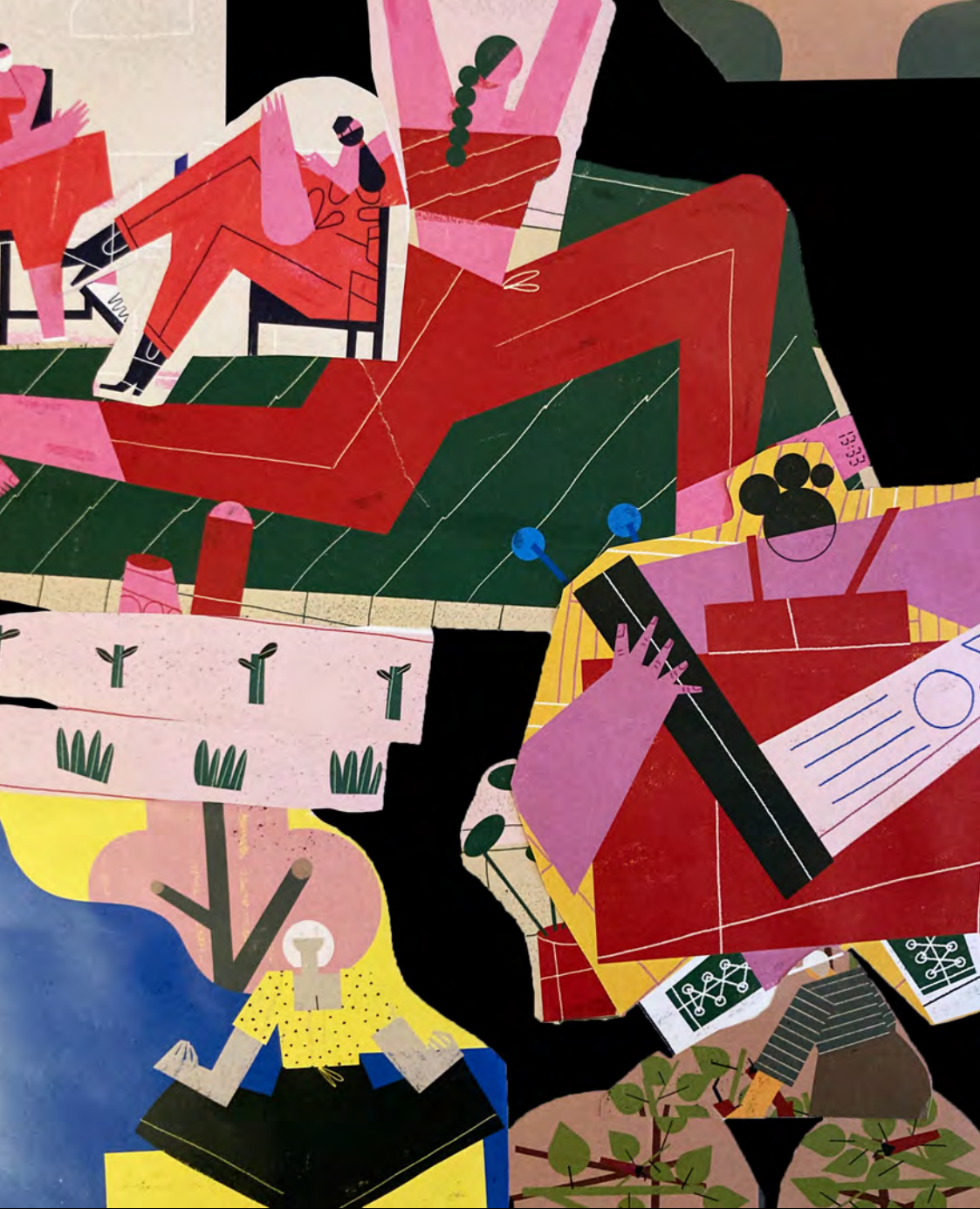
74% of Bristolians feel that traffic congestion is a problem

---

26% of households have no car or van

---

41% of Bristol's employees work between 6pm and 6am,  
and need safe mobility during these times



## INCLUSIVE ECONOMIC GROWTH

# What if Bristol Temple Quarter... Based its economy on care?

In Bristol Temple Quarter, we put care into our business plans. We're a mecca for B-Corps, prioritise sustainable businesses, and ensure that working here is good for your wellbeing. Our approach to sustainability centres on planetary and people's health for the long term. We're the place that has shrunk the poverty gap in Bristol by guaranteeing living wages, recognising the informal and underpaid and moving them towards job security. We've secured a generous provision of affordable housing to make sure that everyone has a good start in life while embracing multi-generational living and the opportunities it brings. In the long term, care is good for the economy. It encourages people to reach their full potential and promotes lives with dignity.





## INCLUSIVE ECONOMIC GROWTH

# What if Bristol Temple Quarter... Was pocket money friendly?

In Bristol Temple Quarter, we welcome everyone, regardless of their reason for being here: friends hanging out, families spending quality time together, children and young people on a school trip, students working on deadlines, co-workers having lunch, business partners having meetings, visitors who just got off the train to get a glimpse of the city... By adopting inclusive values, we keep the basics affordable for everyone: you can get a good cup of coffee for a good price and find indoor and outdoor spaces to play, relax and hang out for free.



## INCLUSIVE ECONOMIC GROWTH

# What if Bristol Temple Quarter... Was a great place to start new ideas?

In Bristol Temple Quarter, we unite people to make brilliant things together. It's a hub where local and international bright minds meet and collaborate to get big ideas off the ground. With Temple Quarter as their playground and platform, they can experiment, test and scale ideas to new heights. In the city's spirit of creativity and pragmatism, we're not afraid of radical proposals. It makes us resilient to downturns and helps build stability in an uncertain world while supporting business growth.



# Why This is Important

45% of all jobs in the West of England region are in Bristol

---

The visitor economy in Bristol and South Gloucestershire is valued at £1.3bn

---

In 2022, over 2500 new enterprises were started in Bristol

---

Two of Bristol's largest industries in 2021 were health and social work and education



## BRILLIANT BUILDINGS

# What if Bristol Temple Quarter... Was a neighbourhood of stories and histories?

In Bristol Temple Quarter, new developments speak local stories and celebrate local people and heritage. From the well-known to the unsung heroes and heroines, we name spaces that reference our rich history. The materiality of our new builds embrace reuse and nod to the past. Our cherished historic icons are preserved. And surrounding trails, interpretation, artworks and activities are supported. The value of each planning application is also measured by how stories from around Temple Quarter, its margins, and neighbouring communities can be experienced in the long-term through the public and private realm that evolves.





## BRILLIANT BUILDINGS

# What if Bristol Temple Quarter... Was a place of sanctuary and welcome?

In Bristol Temple Quarter, we make space for everyone. As a place of sanctuary, our streets represent the diversity that is Bristol. We have a digital archive of local people's stories for those designing and building to widen their perspectives and reference in their designs. We work with local people to understand what welcome means from different lived experiences. We know city living can be hectic so we carve out calm spaces for quiet times, as well as big nights out.



## BRILLIANT BUILDINGS

# What if Bristol Temple Quarter... Made it easy to make friends from 8 to 80?

In Bristol Temple Quarter, we have a friend every decade. While the world's population is getting older, Bristol's is getting younger, so we've made places to draw people together. The potential for intergenerational housing is abundant, so we can grow up and grow old here. We've designed places where grandkids and grandparents play. We're rich in spaces to hang out with a down-to-earth atmosphere that gets people mixing whatever their age.



# Why This is Important

708,450 people visited Bristol Museums during 2022/23, almost double the 379,250 visitors the previous year

---

74% of residents agree people from different backgrounds get on well together in their neighbourhood

---

53% of residents are satisfied with the range and quality of outdoor events in the city, down from 74% pre-pandemic

---

There are more children living in Bristol than people aged 65 and over. Bristol's 82,200 children make up 17.2% of the total population



## QUALITY OPEN SPACES

# What if Bristol Temple Quarter... Was playable everywhere?

In Bristol Temple Quarter, play is for everyone. We've built fun into our pavements, parks, buildings and landscapes. Indoor play spaces keep the fun alive in our rainy climate. And our slow streets, wellbeing routes, and spaces and trees to climb give us room to explore, challenge and relax. Our waterways are clean and support boating and kayaking so we can play about on the water. The Brunel Mile gives us room to run, bike and nods to our heritage bringing a sense of joy to our everyday commute.





## QUALITY OPEN SPACES

# What if Bristol Temple Quarter... Had a great soundtrack?

In Bristol Temple Quarter our streets sound good. We hear languages from around the world, music to make the everyday joyous, and the sounds of nature bringing life to the streets. Sound is part of the city's identity and this means spaces are designed to stimulate the senses and replace traffic noise with a Bristol symphony. Spaces are created with people from a wide range of backgrounds to consider how different cultures use public spaces. We have dedicated spaces that make it easy to make music, from outdoor stages to busking spots. And we focus on making home for nature too.



## QUALITY OPEN SPACES

# What if Bristol Temple Quarter... Celebrated nature?

In Bristol Temple Quarter, we've grown a natural neighbourhood. We enjoy rides to work along the canal by boat or on foot. We walk through avenues of green trees and collect our vegetables from allotments, or get a breath of fresh air in a sensory garden. We go big with a festival of nature to showcase our love for the planet.



# Why This is Important

70% think air quality and traffic pollution is a problem locally

---

87% of residents are concerned about the impacts of Climate Change

---

74.2% of Bristol adults are physically active, highest of all core cities

---

Over 73% of local residents are satisfied with parks and open spaces in Bristol, but only 45% in the most deprived areas

---

75% of Bristol residents are satisfied with their local area as a place to live, but only 50% of people in the most deprived areas



## What if Bristol Temple Quarter... Took happiness seriously?

In Bristol Temple Quarter, happiness is our metric of success. Creating places that make us healthier, that give our lives certainty through a stable job, solid home and the ability to build relationships through the spaces around us. Our places and public spaces are designed around shared rhythms, the times of day people leave for work, take a break, or relax after a long week. They give people opportunities to meet easily and get to know their neighbours. It's a place that ultimately offers us control of our own destiny. If we can measure a happy country, we can measure a happy quarter. Potential partnerships between the University of Bristol and Bristol + Bath R&D will strive to make Bristol Temple Quarter a place that leads the world in happiness.

PARTY = HAPPY! 😊



## VIBRANT & CREATIVE COMMUNITIES

# What if Bristol Temple Quarter... Made festivals easy everyday?

In Bristol Temple Quarter, we make it easy to celebrate and get together everyday. Bristol loves a festival, and here we embrace that spirit to stitch in (rather than start new) to tie into the rest of the celebrations around the city. With a plug and play infrastructure for events and social gatherings we make it easy to access good times, and host a street party on your own front door. Connecting to our city's talents in music, food, and creative arts our placemaking infrastructure includes stages, markets, and outdoor canvases. By getting rid of red tape for street-scale events, we give people of all ages the freedom to express and enjoy their outdoor spaces.



Outdoor cinema  
on side of building



## VIBRANT & CREATIVE COMMUNITIES

# What if Bristol Temple Quarter...Was designed with children?

In Bristol Temple Quarter, we design with and for children so that everyone benefits. We're the UK's no.1 neighbourhood for futures literacy in schools. Multi-school panels collaborate monthly to create designs, steer developments and run frequent festivals to try-out and celebrate new placemaking ideas. Parks, plazas, safe routes, spaces, wayfinding and interpretation have come alive thanks to the inspiration and everyday energy of children.





# Why This is Important

There are 91,900 children under 18 living in Bristol

---

28.4% of people in Bristol belong to a minority ethnic group (i.e. not 'White British')

---

Only 32% of Bristol residents participate in cultural activities at least once a month, from 43% pre-pandemic

---

The population of Bristol is increasingly diverse with at least 45 religions, 185 countries of birth, 287 different ethnic groups and 90 main languages

---

74% of Bristol residents citywide feel that “people from different backgrounds get on well together” in their local area, up from 70% last year

# What if... We Actually Made it Happen?

We're lucky in Bristol to have such a creative, active community. They've helped us to develop these incredible placemaking ideas and aspirations. How do we make sure we support long-term local communities and new residents to make these ideas happen?

Bristol Temple Quarter would benefit from a community-based infrastructure in place that makes participation and co-design part of our everyday, rather than ad-hoc. The elements of this infrastructure could include:

- **Placemaking Action Plan** as a way to prioritise and commit to getting ideas off the ground through partnerships that bring skills, funding, spaces, or people.
- **Kerbside Strategies** that turn space for cars over to new uses to create spots people care for.
- **'Living Library'** vox pops that build up a living archive of real people of the area, and across the city. Use these as live personas for the design and development team to work with, collaborating with creative partners like Screenology.
- **'Street-side Studios'** as welcoming urban rooms that enable the council, communities and other stakeholders to plan places together.
- **'What If...?'** **Poster Walls** among the streets of Bristol Temple Quarter, Community Spaces and the City Council Offices to encourage everyone to think imaginatively about our future.
- **Place Playbook Courses** building placemaking capacity among communities, stakeholders, and developers to shape the future of Bristol Temple Quarter together.

- **Placemaking Microfunds** to support experimental placemaking among community groups, supported by training programmes and evaluation methods to enable successful ideas to scale.
- **'Greentape'** that makes permitting easier for placemaking programmes and events.
- **'Place Pilots'** long-term piloting programme to enable new ideas are tried and tested and learned from thanks to infrastructures. Partner with University of Bristol and other citywide organisations like Design West.
- **'Young Place Futurists'** young people's cohort of placemaking researchers, trained in thinking and designing for the future of the city. Working alongside the masterplanners and development teams they continue to bring a youth-oriented perspective to ensure the place is future-fit.
- **People's Panels** that are organised as communities of interest (e.g. nature) or communities by neighbourhood. Offering capacity building and exchange, regular sessions, and clear responsibilities to build.

It all comes together to make a place that people love and value.

Bristol is a city that does things differently. So we do development differently at Bristol Temple Quarter. We're setting a benchmark for all future places to learn from.



# What Next?

You've made it through to the end of this vision.  
But this is just the start.

The most important part of this visioning work comes through what you do next. It should inspire a fresh way of working, designing and thinking about the place.

We've created a simple compass as a reminder of the core components of the vision. Refer back to this as a quick guide for everything you're working on.

Ask yourself if the work you're doing ...

... embodies the city's spirit and unique qualities?

... brings the vision to life to support welcoming, equitable, inclusive growth?

... considers each of the 5 place principles to create a well-rounded place?

... opens up and tests out new opportunities for the place by asking 'What If?'

Because how you're shaping places is as important as what you're shaping, we've also created a placemaking toolkit. This offers you, your teams and communities, tools and techniques to work in innovative ways throughout the project. An extended version of the vision contains these tools, and we'd welcome you to bring your own to the table.

Finally, if you're reading this, you're lucky enough to have the opportunity to be involved in Bristol Temple Quarter's future. Whether you're a developer, a community member, or a stakeholder, you're all placemakers. And with that comes responsibility.

As one of the most exciting urban opportunities in the nation, it's essential that we shape an equitable Temple Quarter that works for everyone. A place that is regeneration done right and a place that feels true to our city.

It's a challenge, but one that we're up for and we welcome others to take on with us. Take this forward with the action, enthusiasm and pride for which Bristol is known. And let's shape the future of this incredible part of Bristol together.

# Acknowledgements

This vision is a collective endeavour and draws on many hundreds of conversations and ideas from across the city of Bristol. With special thanks to all the individuals, communities and organisations who contributed including:

Bristol City Council

Homes England

West of England Combined Authority

Network Rail

University of Bristol

Historic England

Screenology

Temple Quarter Accessibility Advisory Group

Prior + Partners

PRD

AHMM

Communities involved in visioning workshops on January 2024

Communities involved in sessions at Wellspring Settlement and

Redcliff Hub in February 2024

# Credits

Writing, Design and Vision: The Place Bureau

Illustrations: Collages developed by Bristol Temple Quarter communities in January 2024 working with material from illustrator Antonio Rodriguez

